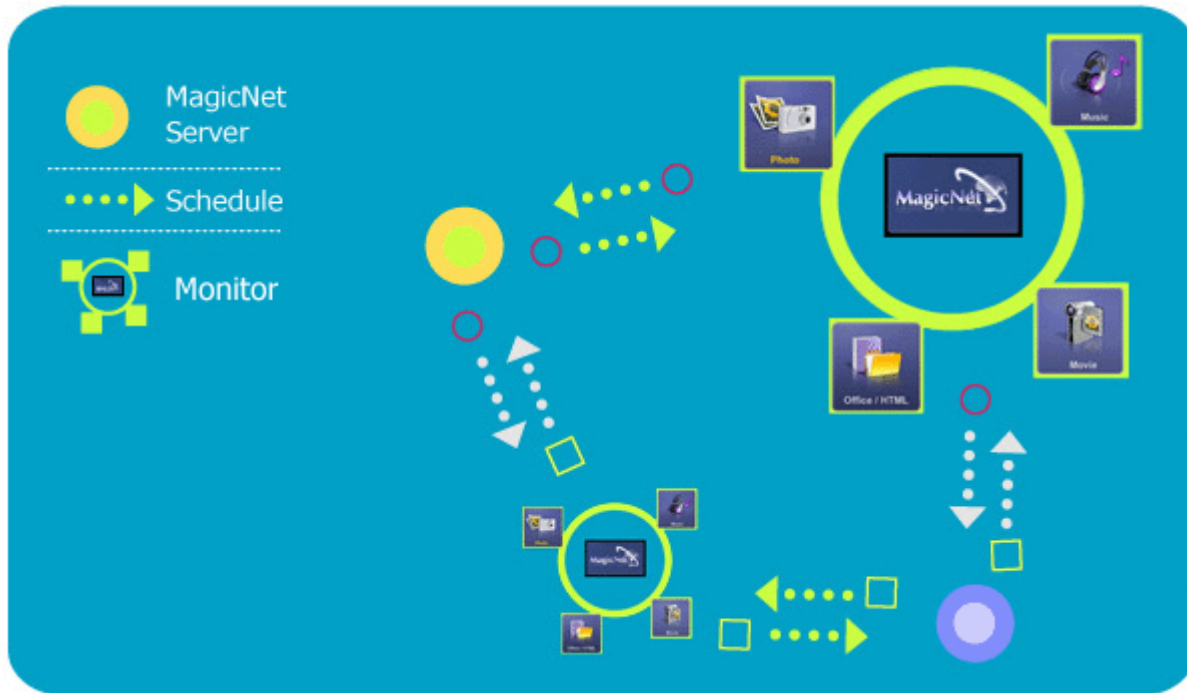


Introduction to MagicNet



MagicNet transmits media files (photo, audio and movie files) and office files (PowerPoint, Excel, Word, HTML and PDF files) existing on a server to monitors using the Ethernet network of the server/client architecture. Several monitors can be connected to a server, and any file can be transmitted to any monitor over the network. Files can be transmitted in two ways: the server sends files to the monitors after registering with the schedule; or the monitor searches for the files registered in the library of the server, sends the files to the monitors, and plays those files after receiving them via the network. When more than one server is connected, you can select a server from the monitor and receive the schedule. Each monitor is capable of accessing the Internet by itself.

Servers and monitors are connected over the network, and each server and monitor has a proper name to confirm each other. Hence, the name of the server must be identical between the server and the clients for a normal connection. That is, when a server's name is "MagicNet", only monitors set to "MagicNet" can be connected to this server. When a server name does not exist under the name set in the monitor, it will wait until the server with the identical name appears. However, when the auto connection function is on, it will try to connect to other servers, and will connect to the server that gives the first reply.

Added Functions in MagicNet 2.0

1. Multiple Display Control (MDC)

The Multiple Display Control (MDC) **is a newly added function in MagicNet 2.0**, which can easily control several monitors from a PC simultaneously. MDC checks and controls the status of monitors that normally connect via the network.



2. Account Management

This function prevents a random user from freely using MagicNet, by placing limits on the operation of functions according to the account privilege.



3. Update

You can update a monitor's MagicNet from the server. However, this function only works when it is connected to a server/monitor with MagicNet Ver 2.0 or higher.



4. Controlling Local Storage Devices/USB File Control of Monitors

You can copy or delete files to a monitor's local storage device or via USB connected to the monitor.



5. Schedule Pause

This function pauses the ongoing schedule in the monitor, and is useful in the event of urgently needing to conduct other work.

Press the buttons in the order of **[+100]-[8]-[2]-[4]-[ENTER]** on the monitor with the remote control, and the schedule will pause temporarily.

To resume the temporarily paused schedule, press the buttons in the order of **[PRE-CH]-[8]-[2]-[4]-[ENTER]** on the remote control.



The specifications are subject to change without notice.
MagicNet is a trademark of SAMSUNG ELECTRONICS CO., Inc.
All other product trademarks mentioned in this document may be registered trademarks of their respective companies.

Schedule OSD



The server program's Power-On option works only if the monitor's power is completely shut off. Please make sure not to use the Power-On option when the monitor is in the process of shutting up since it can possibly cause systematic error on the monitor.

The screenshot shows the MagicNet interface with the following components and numbered callouts:

- 1**: Registering to the Library (top left menu)
- 2**: Library List (file tree on the left)
- 3**: Monitor Preview Window (central black area)
- 4**: Network (status indicator)
- 5**: File Information (video details like Ep01, 640 x 480)
- 6**: MagicNet/Network On/Off Status or Image Selection Menu (bottom right controls)
- 7**: Play Control Tool (play/pause buttons)
- 8**: Registering / the Schedule (top right menu)
- 9**: Date (MDC field showing 2005.08.01)
- 10**: Monitors connected via the Network (table header)
- 11**: Fields Window (table of scheduled programs)

Title	Type	Artist	Date	Run Time
Ep01	.avi		2005-08-01 PM 01:12:18	57:01
Ep02	.avi		2005-08-01 PM 01:12:28	57:25
Ep03	.avi		2005-08-01 PM 01:12:32	59:14
Ep04	.avi		2005-08-01 PM 01:12:35	01:00:23
Ep05	.avi		2005-08-01 PM 01:12:39	01:00:59
Ep06	.avi		2005-08-01 PM 01:12:43	58:17
Ep07	.avi		2005-08-01 PM 01:12:45	59:55
Ep08	.avi		2005-08-01 PM 01:12:04	01:00:43

- 1** Registering to the Library
- 2** Library List
- 3** Monitor Preview Window
- 4** Network
- 5** File Information
- 6** MagicNet/Network On/Off Status or Image Selection Menu
- 7** Play Control Tool
- 8** Registering / the Schedule
- 9** Date
- 10** Monitors connected via the Network
- 11** Fields Window



1 Registering to the Library ▲Up

What is the Library?

The library consists of a collection of files which can be played from a monitor connected to the MagicNet program. The monitor can only play files with the supported formats registered in the library. The library only accepts files of the supported formats.

- Press the "Reg. Library" button to select files that can be registered to the library.
- It has been designed in such a way that only files playable by a monitor can be registered. The selected files are analyzed and the result is displayed.
- Files added to the library are first, automatically classified in the list (2) as movie, audio, photo and office files, and then they are further classified according to the file type.
- The Fields window(11) displays the registered files and their information.



2 Library List ▲Up

Files added to the library are first, automatically classified in the list as movie, audio, photo and office files, and then they are further classified according to their properties.

- All file : Displays all files which are registered in the library.
- Video File : Classified by actor (actress)
- Music File : Classified by musician and album
- Image File
- Office file : Classified by file type (PowerPoint, Excel, Word, PDF, HTML)



3 Monitor Preview Window ▲Up

This window is used either to preview a file (a movie or photo file) registered in the library list (2) and selected in the fields window(11), or to monitor a monitor.

1. **Playing a file registered in the library**

Click on a classification in the library list (2), and the files under the selected classification are displayed in the fields window (11). Then, double-click on a file in the fields window to play it. While playing, the file information is displayed in 5. Only audio, movie, and image files can be played. For office files, only file information is displayed in 5. However, if monitoring for a monitor is proceeding, the information being monitored is displayed instead.

2. Monitoring the selected monitor (Preview)

With the relevant monitor selected by a number ⑩ (the name of the monitor will be displayed in the field ④), the screen played by the currently-selected monitor will be displayed. Audio, video and image files can be played, while only the file information appears for office files.

(In this case, only files registered in the library of the server will be played, and the local/USB files on the monitor will display only the basic information. In addition, when the output source of a monitor does not belong to MagicNet, information on the relevant output source will be displayed.)



④ Network ▲Up

The status bar next to the monitor name will display the overall network status (traffic) of all the monitors connected to the server. For example, assume that the network system capability is 100Mbps and a 100Mbps network card is installed in the server. If there is no network traffic used for other purposes, three monitors are connected, and each monitor uses 10Mbps of traffic, the progression will be indicated as about 30%.

- ❗ Server PC Environment: Recommended (CPU: 3GHz, RAM:512M, Ethernet: 100M)
- ❗ Network Environment: Local network not connected externally
 - 📶 Normal: Server PC network bandwidth: 50% ~ 60%
 - 📶 Max: Server PC network bandwidth: 90% or more (not recommended)
- ❗ For a LAN-connected environment, the connectable number of devices may be reduced depending on the availability of neighboring networks.



⑤ File Information ▲Up

This will display the name, date, size and resolution of the current file.



Displays the On and Off status for the power and the network.
Selecting an image file will change to the appropriate image menu.

Extended Image Menu



Slide

- When the files are selected in the library list :
Sequentially displays the image files registered to the library.
- When monitoring information is being played from a schedule :
Displays the image files registered to the schedule.
- When monitoring the information which the monitor user is selecting and playing :
This function is disabled.

Previous

- When the files are selected in the library list :
Displays the previous file.
- When monitoring information is being played from a schedule :
Displays the previous file. If a slide show is in progress, the slide show is stopped.
- When monitoring the information which the monitor user is selecting and playing :
This function is disabled.

Next

- When the files are selected in the library list :
Displays the next file.
- When monitoring information is being played from a schedule :
Displays the next file. If a slide show is in progress, the slide show is stopped.
- When monitoring the information which the monitor user is selecting and playing :
This function is disabled.

Stop

- When the files are selected in the library list :
Stops the slide show.
- When monitoring information is being played from a schedule :
Stops the slide show.
- When monitoring the information which the monitor user is selecting and playing :
This function is disabled.

Full Screen

Enlarges/shrinks an image file to fit to the full screen.
Double-click the screen to return to the original image size.



7 Play Control Tool ▲Up

Controls for play, stop, next file, previous file, and volume when playing a movie or audio file.



Play / Pause

- When the files are selected in the library list :
Plays the audio/movie files registered with the library list.
- When monitoring information is being played from a schedule :
Plays the audio/movie files registered with the schedule.
- When monitoring the information which the monitor user is selecting and playing : This function is disabled.



Stop

- When the files are selected in the library list :
Stops playing an audio/movie file.
- When monitoring information is being played from a schedule : This function is disabled.
- When monitoring the information which the monitor user is selecting and playing : This function is disabled.



Previous/Next

- When the files are selected in the library list :
Plays the previous/next file in the library list.
- When monitoring information is being played from a schedule :
Plays the previous/next file in the schedule list.
- When monitoring the information which the monitor user is selecting and playing : This function is disabled.



first/last 5 seconds

- When the files are selected in the library list :
Plays the first/last 5 seconds of the file.
 - When monitoring information is being played from a schedule :
Plays the first/last 5 seconds of the file.
 - When monitoring the information which the monitor user is selecting and playing : This function is disabled.
-



8 Registering/Editing the Schedule ▲Up

Allows you to register the files to be run on the monitor in advance.

Schedule Register Menu

- **Library : Registering the schedule through the library**
Among the files on the server PC, files that are added through the registration procedures in the library can be registered with the schedule.
 1. When selecting a file from among the files already registered, or selecting a random file from the schedule registration window,
the file is selected as a schedule file through the library registration procedures.
 2. When selecting an image file for the schedule file, you can add background music from among the following music files. If a schedule file is not an image file, the add/delete

button for the background music is not activated.

- **Storage (Local/USB) : Registering the Storage (Local/USB) File Schedule**

You can select a file from among the local storage of the monitor, or from the USB connected to the monitor to register the selected file with the schedule.

1. From the monitor list, select a monitor where the schedule is to be registered.
The add/delete button of the schedule file is only activated when selecting a monitor that is currently connected to the server.
2. You can add a file from the local storage device of the monitor, or from the USB connected to the monitor by pressing the add button. In this case, it will not go through the library registration procedures on the server.
3. When selecting an image file for the schedule file, you can add background music.
When a schedule file is not an image file, the add/delete button for the background music is not activated.

- **Input/Power : Registering the Input/Power Schedule**

You can register the input source or Power Off for the monitor with the schedule.

1. You can schedule a change of the output source or the power for the monitor.
2. After selecting a monitor where the schedule is to be registered in the monitor list, select an input source or Power Off from the Input/Power Selection.
3. Set the schedule time and press the confirm button.
It will change into the registered output source at the start of the schedule, and it will correctly return to the MagicNet Menu screen when the schedule is over.

1. **Selecting a Monitor**

Selecting either all monitors or a specific monitor, where the schedule will be added to, is available from among the monitors connected via the network.

2. **Schedule a File Add/Delete**

You can select, add or delete the file to be added to the schedule.

3. **Background Music Add/Delete**

Available only when using image files.

Selects an audio file to use as the background music in advance when playing an image file registered to the schedule.

4. **Schedule**

- **Start Time**

This means the starting time of a schedule, which can be entered in years/months/days/hours/minutes.

It is possible to set the start time of a schedule within 7 days of the current day, however setting a time later than 7 days from now is not available.

- **Total Run Time**

The total period of time reserved in the schedule

- **Repeat Function**

- In repeating the schedule at an interval of a day/week/month, select the interval to be repeated and the date for completing the repeat.
The end date of such a repetition can be set within 1 year of the current date.
- If you do not select the repeat option or do not select the end date of the repetition, the schedule will be added once by default.

5. Options

○ **Insert between Existing Schedules**

This means that a new schedule will be inserted without affecting the total playing time of the existing schedules. If a new schedule to be inserted, intrudes on the end time of an existing schedule, the start time selected by the user is ignored, and the start time is changed to after the end time of the existing schedule. When the new schedule to be added intrudes on the start time of an existing schedule, the start time of the existing schedule is changed to after the end time of the new schedule.

○ **Ignore/Overwrite Existing Schedules**

Existing schedules are ignored, and a new user schedule overwrites at the required time. If the new schedule overlaps with an existing schedule, the time of the existing schedule can be changed or even be deleted, since it is overwritten by the new schedule.



9 Date ▲Up

Displays the registered schedules in the Fields window (11) whose date are later than today (9).



10 Monitors Connected via the Network ▲Up

Lists the names of monitors registered via the network.

When a monitor is connected to the network, its background color changes to yellow-green.

● **Reconnect to another server automatically**

1. When selecting a monitor that is currently connected to a server in the monitor list and right-clicking it with the mouse, you can see an item titled 'Reconnect to another server automatically'.
2. When selecting 'Reconnect to another server automatically', the field in front of the menu item is marked, and will also be marked in the option Setup iæ Network Setup 'Reconnect to another server automatically' in the monitor.
3. Selecting this menu enables a monitor to search for another server and connect to a found server when the connection to the server with the name defined in the Setup is not

available.

Let's say there are two servers called S1 and S2, respectively, and a monitor called C, which is currently connected to the S1 server. When the connection to S1 fails or stops, C will automatically be connected to the S2 server.

- **Setting Up a User Password**

1. When selecting a monitor that is currently connected to a server in the monitor list and right-clicking it with the mouse, you will see an item titled 'Setting up a user's password'.
2. When selecting 'Setting up a user password', the field in front of the menu item is marked, and will also be marked in the option Setup iæ Network Setup 'Ask for user password' in the monitor.
3. This is to prevent a random user from using MagicNet indiscriminately. If you select this option, you will be required to enter your password to access the MagicNet menus (Network, Photo/Movie/Music/Office of device, etc.).

- **Update**

1. When selecting a monitor that is currently connected to a server in the monitor list and right-clicking it with the mouse, you can see an item titled 'Update' in the menu. This item enables you to update MagicNet (File name: NK.bin) on the monitor.
2. This item will be deactivated in monitors that are not connected to a server.
3. If you select the Update item, a window pops up. Search for the path to NK.bin, select it, and click the Update button. The update will proceed in two steps:
Download (Save the update file in the monitor) iæ Update (MagicNet installation)
4. You may cancel this function during the download stage, but not during the update stage.
5. Once the update is completed, the monitor will reboot automatically.
6. If you try updating with an abnormal file, a warning message will appear, and the update will not proceed.
7. Please make sure that the power of the monitor is not turned off while updating once the download is over. Furthermore, if the output source is a PC, please turn off the 'monitor off' function in the power options of the connected PC for the duration of the update. MagicNet is not operating normally. If the power turns off during the update, contact our After-Sales Service Center.

- **Schedule Check**

1. **Select All Monitors:**
Checks on all schedules of the registered monitors are available in the (⏸) field. Right-clicking the mouse can turn the power ON or OFF as well as deleting the field. In addition, you can change the name of the monitors.



The server program's Power-On option works only if the monitor's power is completely shut off. Please make sure not to use the Power-On option when the monitor is in the process of shutting up since it can possibly cause systematic error on the monitor.

2. **Select Monitor :**

The schedules of the relevant monitor is queued.

- **Rename**

Type a new name and click confirm. The new name will be saved.



11 Fields Window ▲Up

Displays the status of a file.

- When selecting All Monitors in the Schedule, you can view all schedules registered for each monitor.
 - Control the time by double-clicking on a schedule.
 - When a monitor is selected in the monitor list. Displays the file name including the path, category, start time, end time and playtime.
1. When the All Monitors entry is clicked in the monitor list (**8**), schedules are not displayed in a list, but with images of a box type. The schedules for all monitors in the monitor list are displayed here. You can control the time by double clicking on a box type schedule, dragging and dropping a schedule to move it to a different position, and cut, delete and paste a schedule by using the menus displayed when the right mouse button is clicked.
 2. When you click on a monitor in the monitor list (**8**), the schedules for that monitor are displayed in the list. Right-clicking on a schedule list displays a context menu, allowing you to copy, delete, or edit it. By using the Edit menu, you can change the selected file and time. By using the Copy menu, you can select a monitor to copy.
 3. The files registered to the library are displayed in a list. Right-clicking a file in the list displays a menu, allowing you to view properties for a schedule and deleting a schedule, depending on the kind of menu. You can also directly insert the selected file into a schedule.

MDC Adjustment

Multiple Display Control (MDC) is a function for easily controlling several monitors from a PC.

MDC checks and controls the status of monitors that normally connect via the network.

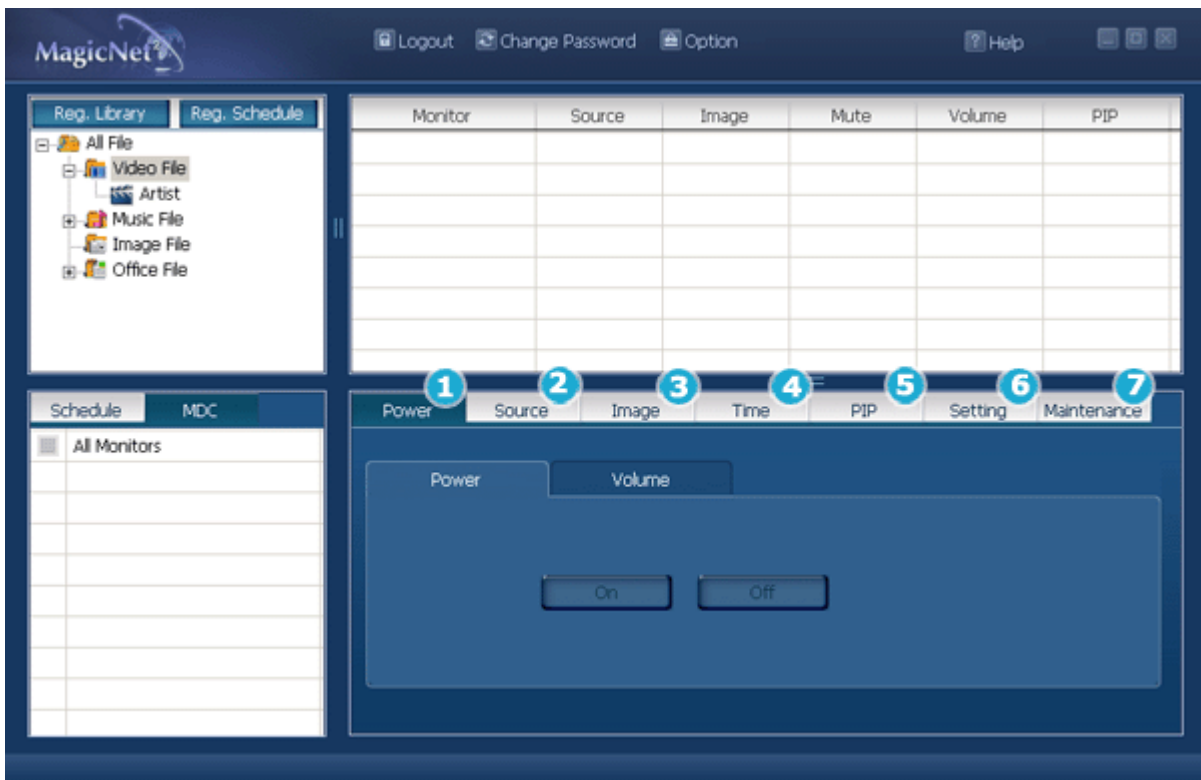
How to Control

1. When selecting MDC from the monitor list window, the monitoring window and the schedule window change into a window showing the monitor status and the control window, respectively.
2. First, select the monitor to apply in the client list window.
3. If you choose All Monitors, all monitors will be selected.
4. If you try to run the detailed functions for each tab without first selecting a monitor, a warning message will appear.
5. After selecting a monitor, click each MDC tab to run the detailed functions.
In this case, when running menus that cannot be adjusted in the output source, the warning 'Adjustment unavailable' will appear. Furthermore, when running adjustable menus, the selected values will be applied to the monitor, and the results will be applied to the MDC status window.
If not applied to the monitor, it will also not be applied to the MDC status window.



The MDC functions comply with the specifications for running the monitor.

MDC OSD



- ① Power
- ② Source
- ③ Image
- ④ Time
- ⑤ PIP
- ⑥ Settings
- ⑦ Maintenance



① Power ▲Up

Select Power ON/OFF.

- ON
- OFF

When changing the volume, the changed details will appear in an OSD on the monitor screen.

- 0 ~ 100



2 Source ▲Up

In the source tab, the output source of the monitor can be changed.
When selecting the following output source, it will change to the relevant output source.
When the relevant device is not connected, a screen with 'Connection required' will appear.

- PC
- BNC
- DVI
- AV
- S-Video
- Component
- MagicNet



3 Image ▲Up

1. **Image Size**

The size of the current output screen with output sources other than PC signals is adjustable.
When selecting the menu below,
it will be changed to the selected size.

- 16:9
- Panorama
- Zoom1
- Zoom2
- 4:3

2. **Image Size PC**

Adjusts the output screen size of the PC signal.
When trying to change the size of non-adjustable input sources, a warning message will appear
on the monitor.

- 16:9
- 4:3



4 Time ▲ Up

1. **Current Time**

Establishes the standard time of the monitor.

In Hours, Minutes and AM/PM, select the time, and click the Apply button.

The current standard time of the monitor will be set.

To activate the On/Off Timer at the set time, the Current Time must be set.

- Hours
- Minutes
- AM/PM

2. **On Timer**

Select the time, output source and volume, and click the Apply button. The monitor will turn on with the established source and volume at the established time.

When Activated is OFF, the ON Timer will not work.

- Hours
- Minutes
- AM/PM
- Activated
- Source
- Volume

3. **Off Timer**

Select the time and click the Apply button. The monitor will turn off at the set time.

When Activated is OFF, the Off Timer will not work.

- Hours
- Minutes
- AM/PM
- Activated



5 PIP ▲ Up

1. **Size**

Select a size. (The size selection has an 'ON' function)

2. **Source**

When selecting sources to be output to PIP, the relevant source will be applied to PIP.

When trying to change a source where PIP cannot be applied or the combination of Main/Sub is incompatible,

a warning message will appear on the monitor.



6 Settings ▲ Up

1. **Picture**

For input sources other than for PC signals, adjust the Contrast, Brightness, Sharpness, Color, Tint and Color Tone of the monitor.

- Contrast
- Brightness
- Sharpness
- Color
- Tint
- Color Tone

2. **Picture PC**

When the output sources are PC signals, adjust the Contrast, Brightness, Sharpness, Color, Tint and Color Tone of the monitor.

- Contrast
- Brightness
- Red
- Green
- Blue

3. **Audio**

Adjust the Bass, Treble and Balance, and set Main/Sub for the Sound Select of Dolby Virtual ON/OFF, BBE ON/OFF and PIP.

In the course of making adjustments, changes appear as OSDs on the monitor screen.

- Bass
- Treble
- Balance
- Dolby Virtual
- BBE
- Sound Select

4. **Adjust Image Lock**

Course, Fine, and select Position.

- Coarse
- Fine
- Position
- Auto Adjustment



7 Maintenance ▲Up

1. Lamp Control

You can control the intensity of the lamp.

(Auto/Manual is available. When Auto is running, Manual is off; and when Manual is running, Auto is off.)

In Auto mode, the lamp is adjusted to the previously set value at the set time.

In Manual, the previous value is maintained.

- Auto
- Hours
- Minutes
- AM/PM
- Value

- Manual

2. Scroll

This function prevents the screen status changing when the same screen is maintained continuously.

If you select the Period and Time and press the Apply button, the screen will scroll downwards at the speed of the previously set time in Period.

For example, for Period 1, Time 5, the screen will be renewed every hour at a speed of 5 seconds.

- Period
- Time

3. Video Wall

This offers a function that enables you to use several monitors as one screen.

First, select the button that sets the number of monitors to be used and their allocation. The allocation figure will appear as a selectable button on the side.

For example, when you choose 2*2, selectable buttons in the form of 2 rows and 2 lines appear,

and if you select number 3 in this matrix, the third screen of the output screen divided by 4 will show up in the monitor.

- 2*2
- 3*3
- 4*4
- 1*5
- 5*1
- OFF

- Format

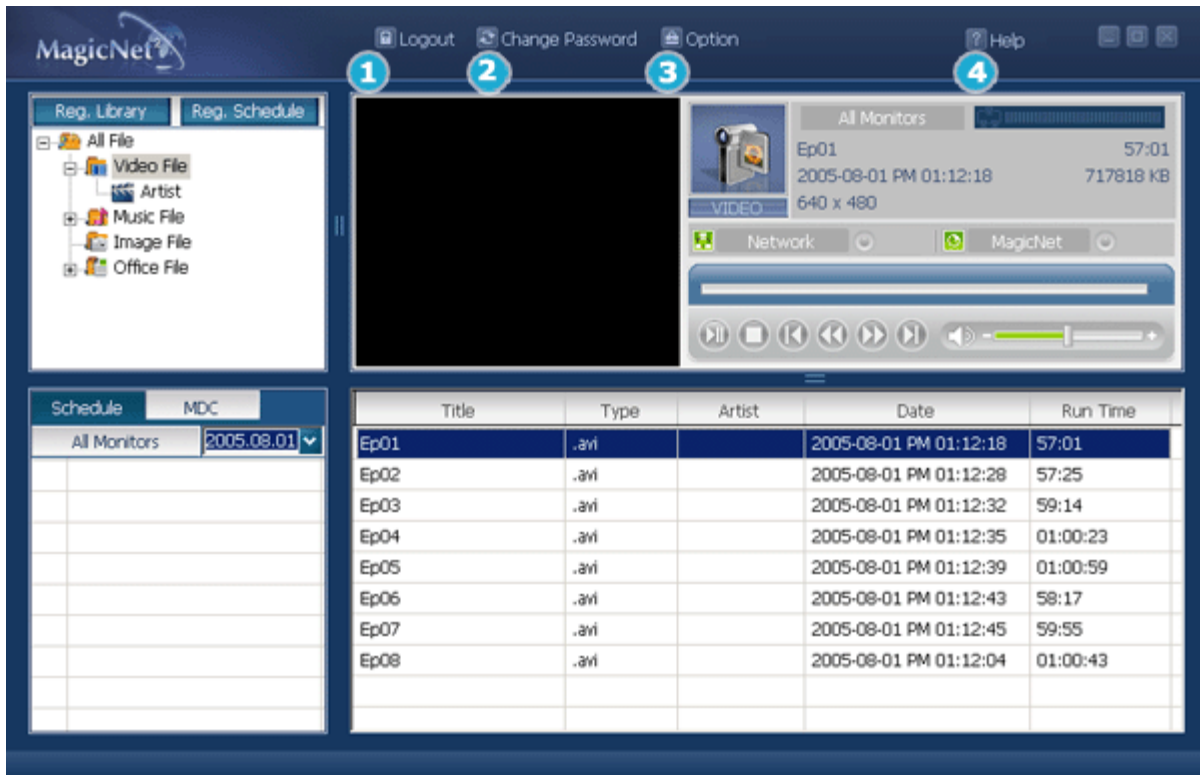


The specifications are subject to change without notice.

MagicNet is a trademark of SAMSUNG ELECTRONICS CO., Inc.

All other product trademarks mentioned in this document may be registered trademarks of their respective companies.

Upper Menu



- 1 Login / Logout
- 2 Change Password
- 3 Options
- 4 Help

1 Login / Logout ▲Up

Before using MagicNet, you first need to login.

After a successful login, the Login button changes to a Logout button. A successful login is required to use the majority of functions.

When installing MagicNet for the first time, the administrator account is provided on the basis of the password entered by the user.

When adding an account, you can select from among three account types, and the selected account type decides the scope of using MagicNet. You may modify or delete the accounts of existing users as well as adding new users.

Account Type	Scope
Administrator	You have the authority to use all MagicNet functions.
Power User	You are not authorized to use the Options menu and the Update function of MagicNet.
Operator	You are not authorized to use the right mouse button click in the Library Registration, Options menu, MDC and Monitor List from among the MagicNet functions.

- User Name
- Password



2 Change Password ▲Up

You can change your password in the login status. Enter your password correctly before logging in. You will be prompted to enter the password for installing MagicNet, and this password will become the default password for the administrator account. If you forget the password, please remove the program and re-install it.

- Old Passworld
- New Passworld
- Confirm Passworld



3 Options ▲Up

1. Server Name

In the Options, you can specify the server name for the connection information. The servers and monitors are connected via the network, and have proper names to identify each other. For a normal connection, the server name between a server and monitor must match. In other words, when the

name of a server is MagicNet, only monitors whose server names are set to "MagicNet" can be connected to that server and receive the schedule. When there is no server with that name set in the monitor, it will wait until a server that matches this name appears. However, when the auto connection function is ON, it tries to connect to any server, and will connect to the server that replies first.

- Server Name

2. User Account

When installing MagicNet for the first time, the administrator account is provided on the basis of the password entered by the user.

When adding an account, select from among three account types, and the selected account type decides the scope of using MagicNet. You may modify or delete the accounts of existing users as well as adding new users.

Account Type

Scope

Administrator	You have the authority to use all functions of MagicNet.
Power User	You are not authorized to use the Options menu and the Update function from among the MagicNet functions
Operator	You are not authorized to use the right mouse button click in the Library Registration, Options menu, MDC and Monitor List from among the MagicNet functions.

- Create
- Modify
- Delete

3. File Manager

File manager copies or deletes files.

Copying files can be done either from Server Folder to Server Folder, Server to Monitor, Monitor to Monitor.

A copy from a monitor to another is available only on the same monitor (i.e. different hard drives on the same monitor).

In the Select Monitor list, only My Computer of the server and the monitor that is correctly connected to the server will appear.

Copy File

When selecting Options to File Manager, the File Management window appears. You can select a server/monitor from the select list. When selecting a monitor from the left window, you are only allowed to select the same monitor. After selecting the copy target, press the copy button. Copying the file will proceed. If the copy target is not a Photo/Music/Movie/Office file, an error message will appear, and copying will stop. In addition, when the file size exceeds the remaining capacity of the target drive,

Delete File

Select the file to be deleted using the same procedure as for copying a file, and click the delete button. The file will be completely deleted from the drive. (The list will be updated promptly).

However, if you try to delete a file that is currently running, the error message "Unable to delete file" will appear.

copying will also stop.

- Copy File
- Delete File



4 Help ▲Up

1. **Help**
Runs program help.
2. **About MagicNet**
Indicates the program version and the copyright details.



The specifications are subject to change without notice.
MagicNet is a trademark of SAMSUNG ELECTRONICS CO., Inc.
All other product trademarks mentioned in this document may be registered trademarks of their respective companies.





The specifications are subject to change without notice.
MagicNet is a trademark of SAMSUNG ELECTRONICS CO., Inc.
All other product trademarks mentioned in this document may be registered trademarks of their respective companies.

Specifications






Supported File Format Spec

	File Format	Resolution	Bit rate		Audio
			CBR	VBR	Sampling rate
Video	MPEG1				
	MPEG2 (PS)	720x480 or less	9Mbps or less	Peak bitate	-
	DivX 4.x			9Mbps or less	-
	DivX 5.x				-
Audio	MP3			-	Available
Photo	JPEG	3500 x 2625	-	-	-
	BMP	or less	-	-	-

-  For MPEG2, only PS (Program Stream) is supported and TS (Transport Stream) is not.
-  For JPEG, the EXIF Format (Digital Camera) is not supported. (However, Samsung digital cameras are supported)

Network Configuration (Number of Devices)

	Bit rate	Normal	Max
Video	4Mbps	10	20
	6Mbps	8	16
	9Mbps	5	9
Audio, Photo	-	20 or more	-

-  Server PC Environment: Recommended (CPU: 3GHz, RAM:512M, Ethernet: 100M)
-  Network Environment: Local network not connected externally
 -  Normal: Server PC network bandwidth: 50% ~ 60%
 -  Max: Server PC network bandwidth: 90% or more (not recommended)
-  For a LAN-connected environment, the connectable number of devices may be reduced depending on the availability of neighboring networks.

Server System Configuration

	CPU	RAM	Ethernet	OS	Application
Minimum	P1.8	256M		Windows XP	

Recommended

P3.0Ghz



512M

100M




Windows 2000
(Service Pack 4)

WMP 9 or later

Local Device (USB) Connection Speed

-  For a mass storage device such as a USB hard disk, it takes approximately 3 - 4 seconds for loading 1 GB.
 -  When the user operates MagicNet while the file is loading, a warning message is displayed.
-

Local Device (USB) compatibility

-  HID(Human Interface Devices)
 - : Keyboard, Mouse
-  MSC(Mass Storage Class)
 - : Devices using the SCSI(Small Computer System Interface) command set
 - : FAT(File Allocation Table) System
-  Exception
 - : Some manufacturers have wrongly specified their device to be USB standard compatible. Our product has exception handling procedures. But Some devices are unlikely to work properly.
 - : Some manufacturers have wrongly specified their device to be SCSI compatible. Such devices are unlikely to work properly.
 - : It is recommended that USB devices are purchased after they are tested and confirmed to be compatible.



The specifications are subject to change without notice.
MagicNet is a trademark of SAMSUNG ELECTRONICS CO., Inc.
All other product trademarks mentioned in this document may be registered trademarks of their respective companies.